



CU SERVICE CENTERS.
The Member Friendly Financial Network

Shared Branching is here!

Facts about Shared Branching

With shared branching, credit unions from all over the country share facilities to give members thousands of convenient locations to perform transactions just as if they were in their home credit union. Whether you are at work, home, or your favorite travel destination, your credit union is always nearby. Anywhere you see the swirl you can conduct a range of transactions, such as:

- Deposits
- Withdrawals
- Loan Payments
- Make transfers between accounts
- ...and more!

To take advantage of this service, when you enter a shared branch you only need to bring:

- Your home credit union's name
- Your account number
- Valid government-issued photo identification, *i.e.*, State Driver's license, US Passport

Shared Branch locations can be located by visiting www.cuservicecenter.com or calling 800-919-2872.

*May not be available at all outlets and locations.

CCFCU

3rd Quarter 2010

Newsline

Published Quarterly for Members of the Cooperative Center Federal Credit Union



Message from the CEO

I am very proud to inform our members that your credit union is well-capitalized and recently received an improved management rating from our NCUA examiner. These two factors have put the credit union in a position to be a valuable asset to the community and our members. We are excited to have developed a partnership with the Berkeley YMCA to provide youth financial literacy services. This is just one example of how your deposits are working to improve the community.

We recently received the Community Development Financial Institution certification. This certification is important for the credit union and put us in a position to qualify for funding sources that will allow the credit union to do more to serve the underserved community.

We can all agree that the economic recovery is taking longer than most experts thought it would take. Many individuals are still looking for ways to get through these very challenging financial times. A good place to look for help is your credit union. Remember, our mission is "people helping people" and serving the underserved members of our community. If you or a family member is trying to overcome a personal financial downturn, check with the credit union, we may be able to help.

Gary Bell
President/CEO

CREDIT UNION UPCOMING HOLIDAYS

CCFCU will be CLOSED:

October 11 in observance of **Columbus Day**

November 11 in observance of **Veterans Day**

November 25-26 in observance of the **Thanksgiving Day Holiday**

December 24 in observance of the **Christmas Day Holiday**

December 31 in observance of the **New Years Day Holiday**

Cooperative Center Federal Credit Union
Your Financial Partner for Life

Addresses and Hours:

Main Office: 2001 Ashby Ave.,
Berkeley, CA 94703

Mailing Address: P.O. Box 248
Berkeley, CA 94701-0248

Monday-Thursday: 9:30 a.m. to 5:00 p.m.
Friday: 9:30 a.m. to 6:00 p.m.

CUBS: Lower Sproul Plaza
UC Berkeley Campus

Monday- Thursday 9:30 a.m. to 4:00 p.m.
Friday 9:30 a.m. to 5:00 p.m.

Board of Directors

James P. Garrett, Chair
Shyaam Shabaka, Vice Chair
Vic C. Vickers, Secretary
Patricia Pitre, Director
Dick Lerner, Director

Supervisory Committee

Patricia Pitre, Chair
Stephanie Hunter, Secretary
Mark Smith, Member

Member Education Committee

Shyaam Shabaka
Dick Lerner
Mark Smith
Debbie Crowson

Management

Gary Bell, CEO / President
Vicki Fong, COO
Debbie Crowson, Marketing Manager
Tess Lim, Accounting Manager



Mission Statement

Cooperative Center Federal Credit Union, a member owned and governed financial institution, is committed to providing quality services and education in a caring, responsible, professional manner, while maintaining long-term financial strength.



Home Banking: www.coopfcu.org

CCFCU is hosting a Blood Drive! Help us reach our goal!

When: Tuesday, November 9, 2010

Time: 10:00 till 4:00

Where: CCFCU Parking Lot

Who can give: Anyone

In order for the blood drive to operate smoothly, we are asking that members RSVP to Debbie Crowson at 510-295-1644 and make an appointment.



**American
Red Cross**

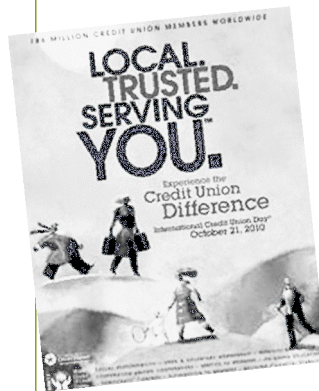
Important Information:

- Potential donor must weigh at least 110 pounds
- Potential donor must be at least 17 years of age
- Potential donor must be in general good health
- Potential donor must not have donated blood in the last 56 days
- At time of donation, donor card or photo ID will be required

Helpful tips:

- Drink plenty of water the day prior and the day of donating blood
- Wear a short-sleeve shirt of one that can be comfortably raised above the elbows
- Eat a small healthy snack prior to donating blood

Happy International Credit Union Day!



October 21, 2010

**In-Branch celebration
Popcorn and goodies
Pre-paid legal services
will be here too!**

Come and be a part of renewing
the credit union spirit!

CCFCU 68th Annual Meeting

December 9, 2010

6:00 p.m. to 8:00 p.m.

Berkeley Yacht Club

1 Seawall Drive • Berkeley Marina

RSVP to Gina O'Leary by November 22, 2010

510-295-1657 or goleary@coopfcu.org